

 PRINCESS®

2026-2027
CRUISING FROM

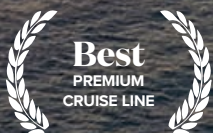
Australia New Zealand & Asia

INCLUDING 2027 CIRCLE PACIFIC CRUISE



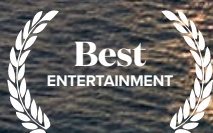
Best
OCEAN
CRUISE LINE

CRUISE PASSENGER
READER'S CHOICE
2015-2023



Best
PREMIUM
CRUISE LINE

CRUISE PASSENGER
READER'S CHOICE
2014-2023



Best
ENTERTAINMENT

CRUISE PASSENGER
READER'S CHOICE
2015-2022



Best
SHORE
EXCURSIONS

CRUISE PASSENGER
READER'S CHOICE
2019-2022



Best
FOR WELLNESS
& SPA

CRUISE PASSENGER
READER'S CHOICE
2019-2020



**Trusted
Brand**
HIGHLY
COMMENDED

READER'S DIGEST
CRUISE OPERATORS
2014, 2018-2020, 2024

Fall in love with Princess®

It's easy to fall in love with these new cruises for 2026-2027 taking you from Australia to amazing destinations in our region. Discover the unforgettable coastlines of Australia. The mesmerising underwater worlds of the tropics. The history and culture of our continent and neighbouring islands. If the allure of a longer trip that visits multiple places entices, our Circle Pacific could just fulfil your dreams. The experience you'll have with Princess brings it all together. Whether it is excursions that make you feel like a local or dining local style over a hangi, you'll see why Princess is the Best Premium Cruise Line*.



Two magnificent ships

Grand Princess® will call Sydney home for the season. Sail from Sydney, Brisbane, Perth (Fremantle) and Auckland to a mesmerising array of destinations. Grand Princess® will also take guests on two spectacular longer cruises. Join her Round Australia adventure with departures from Sydney, Brisbane, Melbourne and Adelaide or the NEW Circle Pacific 2027 cruise. Royal Princess® sails from Sydney taking guests to the wonders of New Zealand, tropical Fiji, culturally rich Tasmania and along the beautiful NSW Sapphire Coast.

2026-2027 Highlights

There are 42 unique itineraries ranging from 2 to 79-nights across 74 destinations in 18 countries. The season offers sailings from six homeports – Sydney, Melbourne, Brisbane, Adelaide, Perth (Fremantle) and Auckland.

The Round Australia cruise offers for the first time sectors ranging from 22 nights. In this release you'll find opportunities to join Grand Princess® and Crown Princess® on a circumnavigation of Australia.

The brand new 2027 Circle Pacific cruise is an Epic Voyage of 79-nights offering guests the opportunity of sailing from Sydney and Brisbane.

A repositioning voyage on Royal Princess® from Singapore offers a delightful sojourn to Brisbane and Sydney.



WHAT'S INSIDE

THE PRINCESS® EXPERIENCE

- Program overview.....1
- Our fleet.....2
- Princess® EZair®.....2
- Princess® MedallionClass®.....3
- Princess® Cruise Packages.....4
- Cruising to/from Sydney.....5
- Round Australia Cruise.....10
- Cruising to/from Brisbane.....12
- Cruising from Singapore.....15
- Circle Pacific 2027 Cruise.....16
- Fares and itineraries.....20
- Cruise Calendar..... back cover

EARLY BOOKING SAVINGS FOR OUR VALUED PAST GUESTS

Book before 31 August, 2025 to receive these savings exclusive for Captain's Circle Members

GRAND PRINCESS® CIRCLE PACIFIC 2027 OFFER

| | | |
|-------------|------------|--------------------|
| Full Cruise | 79 nights | \$1,000 per person |
| Voyages | 49+ nights | \$500 per person |

In addition, Captain's Circle Members will also receive Onboard Spending Money* AUD

| | | |
|-------------|------------|--------------------|
| Full Cruise | 79 nights | \$1,000 per person |
| Voyages | 49+ nights | \$400 per person |

SUMMER 2026-2027 CRUISES

Book before 14 December, 2024

Bonus Onboard Spending Money* AUD for Captain's Circle Members

| | |
|--------------------------------------|------------------|
| 10+ nights and land and sea holidays | \$150 per person |
| 4-9 nights | \$75 per person |
| Up to 3 nights | \$35 per person |



MORE ASHORE

More time ashore

Look for 'More Ashore' on select itineraries for port calls that offer extra time on shore with LATE NIGHT (9pm or later) or OVERNIGHT STAYS. See the sights during the day, then experience the destinations at night!



Circle Pacific 2027 Cruise

Setting out on a 79-night adventure, this Epic Voyage of discovery roundtrip Sydney, Brisbane and Auckland will call into 32 destinations in 13 countries spanning the Pacific Ocean. Sailing over 23,600 nautical miles, discover island gems including Moorea, visit iconic cities like Los Angeles, Vancouver, Tokyo and Singapore. Witness the Alaskan glaciers, sail under San Francisco's Golden Gate Bridge and stand in awe at Mt. Fuji. Unforgettable memories await from your doorstep.

SHARE YOUR STORY

Connect with Princess and fellow guests via Facebook, YouTube, Instagram, X, Pinterest and TikTok.

Share stories of your Princess adventures, watch videos and much more.

#PrincessCruises #ILoveThis



*Cruise Passenger Reader's Choice 2015-2023

Meet the Princess® fleet

These magnificent ships will be sailing from Australia on the cruises featured. Each ship is a destination with wide-ranging amenities, elevated culinary experiences and delightful activities.



Royal Princess®

Princess EZair®

Save time, save money and book your travel worry-free. Don't miss your chance to book your next cruise holiday and airfare early with Princess EZair®! Check out some of the great benefits to booking travel using this easy-to-use tool:

- Surprisingly low prices
- Late arrival protection
- 24/7 Support
- Worry-free booking
- No customisation fee
- Book now & pay later
- Flights that fit your cruise
32 partner airlines

Visit princess.com/ezair

Princess EZair Flight bookings will be subject to Princess EZair Terms and Conditions available at princess.com/en-au/plan/ezair

| | Royal Princess® | Crown Princess® | Grand Princess® |
|--|-----------------|-----------------|-----------------|
| Guests | 3,560 | 3,080 | 2,600 |
| Balconies | Over 1,400 | Over 800 | Over 700 |
| Movies Under the Stars (poolside theatre) | ✓ | ✓ | ✓ |
| The Sanctuary (relaxing retreat for adults) | ✓ | ✓ | ✓ |
| Lotus Spa® & Fitness Centre | ✓ | ✓ | ✓ |
| Italian-inspired Piazza | ✓ | ✓ | ✓ |
| Kids Clubs | ✓ | ✓ | ✓ |
| Pool & Heated Spas | ✓ | ✓ | ✓ |
| Beverage & Dining Options* | | | |
| Vines (wine bar) | ✓ | ✓ | ✓ |
| Pizzeria | ✓ | ✓ | ✓ |
| Burger Grill | ✓ | ✓ | ✓ |
| International Café (24-hour coffees, desserts, sandwiches and tapas) | ✓ | ✓ | ✓ |
| Sabatini's™ Italian Trattoria[†] | ✓ | ✓ | ✓ |
| Crown Grill™^{††} (steak & seafood) | ✓ | ✓ | ✓ |
| Chef's Table Experience* (exclusive dining event) | ✓ | ✓ | ✓ |
| Included Dining: Main Dining Rooms, and World Fresh Marketplace | ✓ | ✓ | ✓ |
| Gelateria / Swirls Ice Creamery | ✓ | ✓ | ✓ |

Venues and dining options vary by ship and are subject to change.
*Charges apply. See deck plans on princess.com/ships for details.



Princess® MedallionClass®

Princess MedallionClass® service is exclusively for everyone. MedallionClass® service begins with your complimentary Medallion® device, a 20-cent sized wearable that connects you to what and who matter most.

EFFORTLESS

- Food, drinks & services delivered anywhere with OceanNow*
- Viewing and bookmarking activities digitally
- Streamline your boarding experience – Australian guests can soon request Medallions shipped to their homes*
- Keyless stateroom entry
- MedallionPay® touch-free payment

CONNECTED

- Enjoy Wi-Fi at Sea†
- On-demand crew assistance
- Easily locate or message loved ones on board

PERSONALISED

- Planning on board activities
- Sharing interests, preferences for tailored service
- Crew knowing your name before you say a word
- Fully customised dining

*US\$15 applies to guests booking a Princess Standard fare. Service available late 2024.

†Please note that depending on where our ships are sailing, you may encounter unavoidable service interruptions due to obstructions caused by geographical features.

‡Charges may apply. *One-time activation charge of AU\$22.99 applies per guest unless purchasing a Plus/Premier package. Limitations, restrictions, and conditions apply.

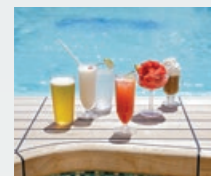
You'll love the value

of our Princess Premier™ and Princess Plus™ packages.



PRINCESS PLUS

Save over 65%[†]



Plus Beverage Package

Drinks up to AU\$22 each

Enjoy a wide array of drinks, from cocktails and spirits to wine to soda, specialty coffee, water and more.



Dining

2 casual dining meals per guest

Dine out at sit-down restaurants like Alfredo's and Kai Sushi and popular pop ups like Pizza and BBQ. What's not to love?



MedallionNet® Max Wi-Fi

1 device per guest

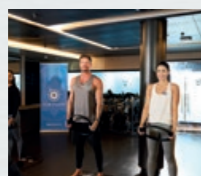
Stay connected in a wired world, text, share, video chat, stream and more with our highest bandwidth available, exclusive to Plus and Premier.



Premium Desserts

2 per day per guest

Indulge your sweet tooth.



Fitness Classes

2 per cruise per guest

Also included:

- ✓ Room Service Delivery charges
- ✓ OceanNow® Delivery Activation charge
- ✓ Unlimited juice bar

Princess Plus™
Your Cost: \$65
per day per guest



PRINCESS PREMIER

Save over 74%[†]



Unlimited Premier Beverage Package

Drinks up to AU\$30 each

Enjoy a wide array of drinks, from cocktails and wine to soda, coffee, water and more.



Dining

Unlimited casual and specialty dining meals per guest

Dine at Crown Grill™, take a pasta at Sabatini's or any other award-winning specialty restaurant.



MedallionNet® Max Wi-Fi

Up to 4 devices per guest

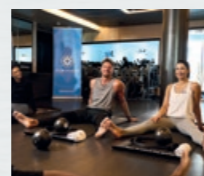
Grab the device you want with ease, text, share, video chat, stream and more with our highest bandwidth available, exclusive to Plus and Premier.



Premium Desserts

Unlimited

Indulge your sweet tooth.



Fitness Classes

Unlimited



Theatre seating

Reserved seating

(For production shows daily) – you'll love the reserved seating in the Princess Theatre.



Photo package

Unlimited digital + 3 prints

Also included:

- ✓ Room Service Delivery charges
- ✓ OceanNow® Delivery Activation charge
- ✓ Unlimited juice bar

Princess Premier™
Your Cost: \$100
per day per guest



CRUISING TO/FROM Sydney, Warrane

Awaken your senses on a fabulous cruise discovering wonders close to home departing from Sydney's glorious harbour. Head to New Zealand and marvel at the spectacular scenery of Fiordland National Park. Immerse yourself in all things Kiwi on board and on shore. Experience Māori culture, take a peek into moviemaking magic, visit famous vineyards and see glowworms twinkle in underground caves. And the scenery – what's not to love? Popular 13, 14 and a new 15 night cruise on Crown Princess® feature on this new program. Why not celebrate Christmas on board Royal Princess® and leave all the organising to us!



New Zealand

13-15
NIGHTS

ROUNDRIP FROM SYDNEY

SYDNEY ► BAY OF ISLANDS ► AUCKLAND ► PICTON (FOR MARLBOROUGH WINE REGION) ► CHRISTCHURCH (LYTTELTON) ► DUNEDIN (PORT CHALMERS) ► FIORDLAND NATIONAL PARK SCENIC CRUISING ► SYDNEY



2026
Grand Princess® Nov 3rd Tue 15 nights
Royal Princess® Dec 5 Sat 13 nights

2027
Royal Princess® Jan 16th Sat 14 nights
Feb 20th Sat 14 nights
Feb 7 Sun 13 nights
Mar 6 Sat 13 nights

Interior fares from \$2,849pp twin share including drinks, Wi-Fi and more*



*Fares are based on 13-night Royal Princess® 5/12/2026 sailing on Princess Plus™ fare. Fares for other dates may vary. †Itinerary and ports vary. See princess.com #Operates in reverse. Itinerary and ports vary. See princess.com



New Zealand
Holiday



13
NIGHTS

ROUNDRIP FROM SYDNEY

SYDNEY ► BAY OF ISLANDS ► AUCKLAND ► PICTON (FOR MARLBOROUGH WINE REGION) ► CHRISTCHURCH (LYTTELTON) ► DUNEDIN (PORT CHALMERS) ► FIORDLAND NATIONAL PARK SCENIC CRUISING ► SYDNEY



2026
Royal Princess® Dec 22 Tue

Interior fares from \$3,589pp twin share including drinks, Wi-Fi and more*



*Fares are based on Royal Princess® 22/12/26 sailing on Princess Plus™ fare.

* Conditions apply. See princess.com
†† Visit princess.com/cruisepackagesau for full details, terms and conditions for each fare type.



CRUISING TO/FROM
Sydney, Warrane

Sailing from Sydney to the tropics brings sunsets over tropical vistas, welcome locals and a laid-back vibe just perfect for relaxation. From snorkelling over corals to visiting tribal villages these cruises are perfect escapes. The new Papua New Guinea cruise combines gems along the Queensland Coast with two PNG gems; Alotau with its crystal waterfalls and war history and the Conflict Islands offering abundant marine life.

The popular Fiji & South Pacific cruise returns with a departure in January – during the school holidays – perfect for all the family. Let summer sunshine linger and head out to the tropics in March.



CRUISING TO/FROM
Sydney, Warrane

Need to take a breath of air? Discover Tasmania. 6 & 7-night cruises take in the delights of Hobart, history at Port Arthur and the stunning scenery of the Freycinet Peninsula. With a late night in Hobart there's plenty of time to visit the Huon Valley and Tahune Airwalk, take a Wildlife Cruise or soak in the views from Mt. Wellington.

Eden on NSW's South Coast has been welcoming cruise visitors for the past couple of years and the Sapphire Coast Seacation is a wonderful mini escape, with a loved one, family or a group of friends.



Fiji & South Pacific **12 & 13**
NIGHTS

ROUNDRIP FROM SYDNEY



Papua New Guinea **14**
NIGHTS

ROUNDRIP FROM SYDNEY



Tasmania **6 & 8**
NIGHTS

ROUNDRIP FROM SYDNEY



Sapphire Coast Seacation **3 & 4**
NIGHTS

ROUNDRIP FROM SYDNEY

SYDNEY ► LAUTOKA ► SUVA ► DRAVUNI ISLAND ► MYSTERY ISLAND ► NOUMÉA ► SYDNEY



2027
Royal Princess® Grand Princess®
Jan 4* Mon 12 nights Mar 20 Sat 13 nights

Interior fares from **\$2,949**pp twin share including drinks, Wi-Fi and more*



*Fares are based on 13-night Grand Princess® 20/3/27 sailing on Princess Plus™ fare. Fares for other dates may vary. *Itinerary and ports vary. See princess.com

SYDNEY ► AIRLIE BEACH (FOR THE WHITSUNDAYS) ► TOWNSVILLE ► YORKEYS KNOB (FOR CAIRNS) ► PORT DOUGLAS (FOR THE GREAT BARRIER REEF) ► ALOTAU (MILNE BAY) ► CONFLICT ISLANDS ► BRISBANE ► SYDNEY



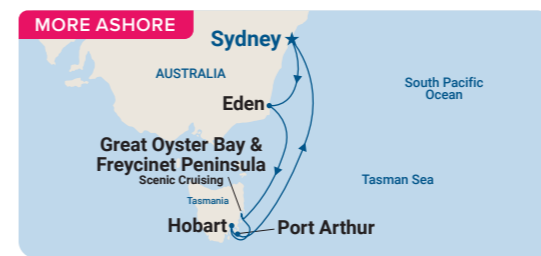
2027
Grand Princess®
Jun 3 Thu

Interior fares from **\$3,169**pp twin share including drinks, Wi-Fi and more*



*Fares are based on Grand Princess® 3/6/27 sailing on Princess Plus™ fare.

SYDNEY ► EDEN ► GREAT OYSTER BAY & FREYCINET PENINSULA SCENIC CRUISING ► HOBART ► PORT ARTHUR ► SYDNEY



2027
Royal Princess®
Jan 30* Sat 8 nights Mar 19 Fri 6 nights

Interior fares from **\$1,399**pp twin share including drinks, Wi-Fi and more*



*Fares are based on 6-night Royal Princess® 19/3/27 sailing on Princess Plus™ fare. Fares for other dates may vary. *Itinerary and ports vary. See princess.com

SYDNEY ► EDEN ► SYDNEY



2026
Royal Princess®
Dec 18* Fri 4 nights
2027
Royal Princess®
Mar 25 Thu 3 nights

Interior fares from **\$749**pp twin share including drinks, Wi-Fi and more*



*Fares are based on 3-night Royal Princess® 25/3/27 sailing on Princess Plus™ fare. Fares for other dates may vary. *Itinerary varies. See princess.com



CRUISING TO/FROM
Sydney, Warrane

Who doesn't love a cruise along Queensland's coast? Step on board, take a cocktail, head to the pool, watch the sunset and get ready for adventures ashore; snorkelling over reefs, wandering through the world's oldest rainforest or perhaps visiting Australia Zoo. These cruises get you in a summer state of mind.

Head to our southern shores where wildlife, seafood delights and mesmerising attractions await. The Southern Australia Explorer takes in three states – Victoria, South Australia and Tasmania for a triple treat.



CRUISING TO/FROM
Sydney, Warrane

The popular Northern Explorer cruise sails almost half way around Australia across the Top End showcasing our amazing coastlines and coastal cities from the tropical splendours of Queensland, outdoor adventures in Darwin and the stunning Western Australian coast with its turquoise waters and red ochre rocks. Convenient departures from Sydney and Fremantle.

Visit Newcastle on the Hunter Coast Seacation sailing between Brisbane and Sydney or Sydney to Melbourne. Take a wander to the Lighthouse, chill out Customs House or head out to the vineyards in the Hunter Valley.



Queensland **9 & 10**
NIGHTS

ROUNDRIP FROM SYDNEY

SYDNEY ► BRISBANE ► AIRLIE BEACH (FOR THE WHITSUNDAYS) ► YORKEYS KNOB (FOR CAIRNS) ► WILLIS ISLAND SCENIC CRUISING ► SYDNEY



2026
Royal Princess® Grand Princess®
Nov 25* Wed 10 nights Nov 30 Mon 9 nights

Interior fares from **\$1,989pp** twin share including drinks, Wi-Fi and more*



*Fares are based on 9-night Grand Princess® 30/11/26 sailing on Princess Plus™ fare. Fares for other dates may vary.
†Itinerary and ports vary. See princess.com



Southern Australia Explorer **12**
NIGHTS

ROUNDRIP FROM SYDNEY

SYDNEY ► MELBOURNE ► KANGAROO ISLAND ► ADELAIDE ► PORT LINCOLN ► HOBART ★ ► PORT ARTHUR ► SYDNEY



2026
Crown Princess® Grand Princess®
Nov 18 Wed

Interior fares from **\$2,809pp** twin share including drinks, Wi-Fi and more*



*Fares are based on Grand Princess® 18/11/26 sailing on Princess Plus™ fare.



Hunter Coast Seacation **4**
NIGHTS

BETWEEN BRISBANE AND SYDNEY AND SYDNEY TO MELBOURNE

BRISBANE ► NEWCASTLE ► SYDNEY



2026
Crown Princess®
Oct 7 Wed Syd to Mel
2027
Grand Princess®
Mar 16 Tue Bris to Syd Apr 2* Fri Syd to Mel

Interior fares from **\$959pp** twin share including drinks, Wi-Fi and more*



Fares are based on Grand Princess® 16/3/27 sailing on Princess Plus™ fare. †Itinerary and ports vary. See princess.com



Northern Explorer **15 & 17**
NIGHTS

BETWEEN SYDNEY/OR BRISBANE AND PERTH

SYDNEY ► BRISBANE ► WILLIS ISLAND SCENIC CRUISING ► PORT DOUGLAS (FOR THE GREAT BARRIER REEF) ► DARWIN ★ ► KIMBERLEY COAST SCENIC CRUISING ► YAMPI SOUND SCENIC CRUISING ► BROOME ► EXMOUTH ► PERTH (FREMANTLE)



2026
Crown Princess®
Oct 18* Sun 17 nights Per to Syd Oct 18* Sun 15 nights Per to Bris
2027
Grand Princess®
Apr 13* Tue 17 nights Per to Syd Apr 30 Fri 17 nights Syd to Per
May 17* Mon 17 nights Per to Syd May 17* Mon 15 nights Per to Bris

Interior fares from **\$4,309pp** twin share including drinks, Wi-Fi and more*



*Fares are based on 17-night Grand Princess® 30/4/27 sailing on Princess Plus™ fare. Fares for other dates may vary.
†Operates in reverse. Itinerary and ports vary. See princess.com

Round Australia

A circumnavigation of the Australian continent is one you will treasure. This could be your once-in-a-life adventure where you can see it all – north, south, east and west.

Taking in a grand sweep of Australia there is plenty of time for relaxing sea days and adventures on land. Hear stories of times past in Tasmania. Savour amazing seafood in South Australia. Sip world-class wines from the Barossa and the Margaret River. Trek through rainforests, and swim crystalline waters.

Sit in awe as you watch the changing coastal scenery – from the Great Australian Bight to the Kimberleys. Let each sunrise greet a new day and each sunset be one of celebration. Departs in 2026 and 2027.

Round Australia

ROUNDRIP FROM SYDNEY

SYDNEY TO BRISBANE, MELBOURNE TO SYDNEY, ADELAIDE TO SYDNEY

22-28

NIGHTS



| DATE | PORT |
|----------|--|
| 2027 | Itinerary based on Grand Princess® Sydney - Sydney 28-night sailing. |
| 2 APR | SYDNEY |
| 3 APR | NEWCASTLE |
| 4-5 APR | CRUISING THE TASMAN SEA |
| 6 APR | MELBOURNE |
| 7 APR | CRUISING THE SOUTHERN OCEAN |
| 8 APR | ADELAIDE |
| 9-10 APR | CRUISING THE GREAT AUSTRALIAN BIGHT & INDIAN OCEAN |
| 11 APR | ALBANY |
| 12 APR | MARGARET RIVER (BUSSELTON) ‡ |
| 13 APR | PERTH (FREMANTLE) |
| 14 APR | CRUISING THE INDIAN OCEAN |
| 15 APR | EXMOUTH ‡ |

| DATE | PORT |
|-----------|---|
| 16 APR | CRUISING THE INDIAN OCEAN |
| 17 APR | BROOME |
| 18 APR | YAMPI SOUND SCENIC CRUISING |
| 19 APR | KIMBERLEY COAST SCENIC CRUISING |
| 20 APR | CRUISING THE INDIAN OCEAN & TIMOR SEA |
| 21 APR | DARWIN |
| 22-24 APR | CRUISING THE TIMOR SEA & PACIFIC OCEAN |
| 25 APR | PORT DOUGLAS (FOR THE GREAT BARRIER REEF) ‡ |
| 26 APR | WILLIS ISLAND SCENIC CRUISING |
| 27 APR | CRUISING THE PACIFIC OCEAN |
| 28 APR | BRISBANE |
| 29 APR | CRUISING THE TASMAN SEA |
| 30 APR | SYDNEY |

| Itinerary | Departs | Nights | Interior from* | Interior from* |
|--|-----------|--------|----------------|----------------|
| Crown Princess® 2026 <i>Itinerary varies see princess.com</i> | | | | |
| SYDNEY TO SYDNEY | 7 Oct 26 | 28 | \$5,719 | \$7,539 |
| SYDNEY TO BRISBANE | 7 Oct 26 | 26 | \$5,579 | \$7,269 |
| MELBOURNE TO SYDNEY | 11 Oct 26 | 24 | \$5,149 | \$6,709 |
| ADELAIDE TO SYDNEY | 13 Oct 26 | 22 | \$4,719 | \$6,149 |
| Grand Princess® 2027 | | | | |
| SYDNEY TO SYDNEY | 2 Apr 27 | 28 | \$5,719 | \$7,539 |
| SYDNEY TO BRISBANE | 2 Apr 27 | 26 | \$5,579 | \$7,269 |
| MELBOURNE TO SYDNEY | 6 Apr 27 | 24 | \$5,149 | \$6,709 |
| ADELAIDE TO SYDNEY | 8 Apr 27 | 22 | \$4,719 | \$6,149 |



Albany, Image courtesy Tourism Western Australia



Great Barrier Reef



Image courtesy Tourism Western Australia



CRUISING TO/FROM
Brisbane, Meeanjin

Sailing from the homeport of Brisbane allows you to get into the holiday mood the moment your step on board. No waiting at airports and losing precious holiday time! Popular 14-night New Zealand cruises return, visiting the delights of both the North and South Islands with the highlight of sailing into Fiordland where powerful ice has shaped a majestic landscape.

The 14-night Fiji & South Pacific cruise visits Fiji and New Caledonia. Departing early January the cruise will take care of the kids during school holidays with activities galore, you can relax and enjoy a holiday to remember.



CRUISING TO/FROM
Brisbane, Meeanjin

If you have ventured overseas recently, then isn't it time to soak in the wonders of your state, Queensland? Snorkel, cruise over the reef, head to the rainforests, perhaps play a game of golf in Port Douglas, then sit back and watch the sunset on deck. You'll love the feeling of being blissfully relaxed.

Tasmania offers a very different kind of cruise experience, with history and culture beckoning. Not to mention the art galleries of Hobart, the local seafood to savour, adventures along the NSW coast including sailing Sydney's magnificent harbour.



New Zealand

14
NIGHTS

ROUNDRIP FROM BRISBANE



Fiji & South Pacific

14
NIGHTS

ROUNDRIP FROM BRISBANE



Queensland

7-10
NIGHTS

ROUNDRIP FROM BRISBANE



Tasmania

12
NIGHTS

ROUNDRIP FROM BRISBANE

BRISBANE ► AUCKLAND ► TAURANGA ► PICTON (FOR MARLBOROUGH WINE REGION) ► CHRISTCHURCH (LYTTELTON) ► DUNEDIN (PORT CHALMERS) ► FIORDLAND NATIONAL PARK SCENIC CRUISING ► BRISBANE



2026
Grand Princess®
Dec 23 Wed

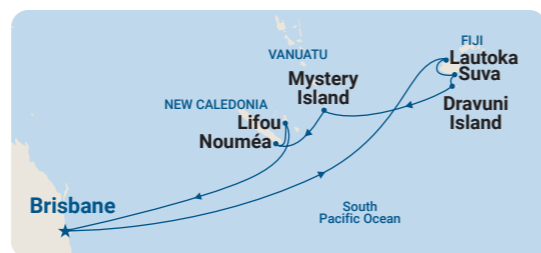
2027
Grand Princess®
Feb 1 Mon Feb 15 Mon

Interior fares from **\$2,809**pp twin share including drinks, Wi-Fi and more*



*Fares are based on Grand Princess® 1/2/27 sailing on Princess Plus™ fare. Fares for other dates may vary.

BRISBANE ► LAUTOKA ► SUVA ► DRAVUNI ISLAND ► MYSTERY ISLAND ► NOUMÉA ► LIFOU ► BRISBANE



2027
Grand Princess®
Jan 6 Wed

Interior fares from **\$3,149**pp twin share including drinks, Wi-Fi and more*



*Fares are based on Grand Princess® 6/1/27 Princess Plus™ fare.

BRISBANE ► AIRLIE BEACH (FOR THE WHITSUNDAYS) ► TOWNSVILLE ► YORKEYS KNOB (FOR CAIRNS) ► PORT DOUGLAS (FOR THE GREAT BARRIER REEF) ► WILLIS ISLAND SCENIC CRUISING ► BRISBANE



2026
Royal Princess®
Nov 23[^] Mon 10 nights

2027
Grand Princess®
Mar 1[^] Mon 7 nights Mar 8 Mon 8 nights

Interior fares from **\$1,669**pp twin share including drinks, Wi-Fi and more*



*Fares are based on 8-night Grand Princess® 8/3/27 sailing on Princess Plus™ fare. Fares for other dates may vary. [^]Itinerary and ports vary. See princess.com

BRISBANE ► SYDNEY ► EDEN ► GREAT OYSTER BAY & FREYCINET PENINSULA SCENIC CRUISING ► HOBART ► PORT ARTHUR ► BURNIE ► NEWCASTLE ► BRISBANE



2026
Grand Princess®
Dec 11[^] Fri

2027
Grand Princess®
Jan 20 Wed

Interior fares from **\$2,609**pp twin share including drinks, Wi-Fi and more*



*Fares are based on 20/1/27 sailing on Princess Plus™ fare. Fares for other departures may vary. [^]Itinerary and ports vary. See princess.com

CRUISING TO/FROM
Brisbane, Meeanjin

Papua New Guinea is a destination like no other. Combining the best of the Queensland Coast with two incredibly diverse ports in Papua New Guinea offering the chance to explore historical wrecks, witness local customs and discover a paradise of white-sand beaches, crystal waterfalls and volcanic mountains.

Rekindle a romance, join family and friends, or recharge and reconnect on a 2-night Princess Australia Seacation. These cruises offer great value over a typical hotel holiday, with meals, accommodation and entertainment all included. If you love to cruise or would like to try cruising join the Princess family on a fabulous getaway.



**Papua
New Guinea**

14
NIGHTS

ROUNDRIP FROM BRISBANE

BRISBANE ► SYDNEY ► AIRLIE BEACH ► TOWNSVILLE ►
YORKEYS KNOB (FOR CAIRNS) ► PORT DOUGLAS
(FOR THE GREAT BARRIER REEF) ► ALOTAU (MILNE BAY) ►
CONFLICT ISLANDS ► BRISBANE



2027
Grand Princess®
Jun 1 Tue

Interior fares from **\$3,169**pp twin share
including drinks, Wi-Fi and more*



*Fares are based on Grand Princess® 1/6/27 sailing on Princess Plus™ fare.



**Australia
Seacations**

2
NIGHTS

BRISBANE TO SYDNEY AND SYDNEY TO BRISBANE

BRISBANE ► SYDNEY



2026
Crown Princess® Royal Princess®
Nov 2 Mon Nov 23 Mon Dec 3 Thu
Grand Princess®
Dec 9[†] Wed Syd to Bris
2027
Grand Princess®
Apr 28 Wed

Interior fares from **\$499**pp twin share
including drinks, Wi-Fi and more*



*Fares are based on all sailings listed on Princess Plus™ fare.
†Operates in reverse – Sydney to Brisbane departure. See princess.com

CRUISING FROM
Singapore

These voyages from Singapore to Brisbane and Sydney offer the chance to join Royal Princess® as she heads to Australian shores for her season of cruising.

There's always something to love on cruises that visits exotic Asian cities before the wonders of Australia. Savour days at sea being looked after by the attentive Princess crew. Enjoy a holiday without a care in the world and bring home unforgettable memories.



Asia & Australia

19
NIGHTS

SINGAPORE TO SYDNEY

SINGAPORE ► KUALA LUMPUR (PORT KELANG) ►
PENANG ► PHUKET ► LOMBOK ► DARWIN ★ ►
YORKEYS KNOB (FOR CAIRNS) ► BRISBANE ► SYDNEY



2026
Royal Princess®
Nov 6 Fri

Interior fares from **\$4,159**pp twin share
including drinks, Wi-Fi and more*



*Fares are based on Royal Princess® 6/11/26 sailing on Princess Plus™ fare.



Asia & Australia

17
NIGHTS

SINGAPORE TO BRISBANE

SINGAPORE ► KUALA LUMPUR (PORT KELANG) ►
PENANG ► PHUKET ► LOMBOK ► DARWIN ★ ►
YORKEYS KNOB (FOR CAIRNS) ► BRISBANE



2026
Royal Princess®
Nov 6 Fri

Interior fares from **\$3,729**pp twin share
including drinks, Wi-Fi and more*



*Fares are based on Royal Princess® 6/11/26 sailing on Princess Plus™ fare.

Cruise itineraries are not guaranteed. Pricing is subject to availability. See page 19 for full Terms and Conditions. All cruises see page 20-24 and the cruise calendar on the back page.

ROUNDRIP FROM BRISBANE ▶ 15 JUNE 2027 ▶ 79 NIGHTS
 ROUNDRIP FROM SYDNEY ▶ 17 JUNE 2027 ▶ 79 NIGHTS

Circle Pacific 2027

An Epic Voyage onboard Grand Princess®

Sail from Sydney or Brisbane on the full 79-night Epic Voyage or take a shorter sector, but don't miss out on this awe-inspiring adventure.

Enjoy a front row seat as you sail past majestic glaciers in Alaska. Feel the heartbeat of dynamic cities like Tokyo and Hong Kong and the laid-back vibe of island gems like Apia and Moorea. Mark off those bucket list places and be inspired by less-explored ports like Wrangell in Alaska.

Every arrival promises a brand new experience.
 Fall in love with every destination.



| | | | |
|---|-------------------------------|--|--|
| <p>79 days</p> <p>roundtrip from Sydney and Brisbane</p> | <p>32 destinations</p> | <p>over 15</p> <p>UNESCO World Heritage Sites</p> | <p>9 MORE ASHORE</p> <p>late night calls with an overnight in Hong Kong</p> |
| <p>23,600 nautical miles</p> | <p>13 countries</p> | <p>Cross Equator</p> <p>2 times</p> | <p>Cross the Dateline</p> <p>2 times</p> |



Tokyo, Japan



Moorea, French Polynesia



Captain's Circle Early Booking Benefits

Princess Past Guests booking by 31 August, 2025 will receive:

Up to \$2,000 per stateroom off launch fares!^{*}
 Full Cruise 79 nights \$1,000 per person
 Voyages 49 nights + \$500 per person

Plus, also receive Onboard Spending Money[^] AUD

Full Cruise 79 nights \$1,000 per person
 Voyages 49 nights + \$400 per person

Grand Princess® Circle Pacific Cruise 2027

ROUNDTRIP FROM SYDNEY

79 NIGHTS

| DATE | PORT | DATE | PORT |
|-----------|---|----------------|--|
| 2027 | | 2027 | |
| 17 JUN | SYDNEY | 25 JUL | COLLEGE FJORD, ALASKA SCENIC CRUISING |
| 18-20 JUN | CRUISING THE TASMAN SEA | 26 JUL | ANCHORAGE, ALASKA (WHITTIER) |
| 21 JUN | AUCKLAND, NEW ZEALAND | 27 JUL – 4 AUG | CRUISING THE NORTH PACIFIC OCEAN – CROSS THE INTERNATIONAL DATELINE, DAY OMITTED |
| 22 JUN | BAY OF ISLANDS, NEW ZEALAND ⚓ | 5 AUG | TOKYO, JAPAN |
| 23-24 JUN | CRUISING THE PACIFIC OCEAN | 6 AUG | SHIMIZU, JAPAN (FOR MT. FUJI) |
| 25 JUN | SUVA, FIJI ★ | 7 AUG | OSAKA, JAPAN (FOR KYOTO) ★ |
| 26 JUN | DRAVUNI ISLAND, FIJI | 8 AUG | KOCHI, JAPAN |
| 27 JUN | CRUISING THE SOUTH PACIFIC OCEAN | 9 AUG | KAGOSHIMA, JAPAN |
| 28 JUN | APIA, WESTERN SAMOA | 10 AUG | CRUISING THE EAST CHINA SEA |
| 29-30 JUN | CROSS THE INTERNATIONAL DATELINE, EXTRA DAY, CRUISING THE PACIFIC OCEAN | 11 AUG | ISHIGAKI, JAPAN |
| 1 JUL | TAHITI, FRENCH POLYNESIA (PAPEETE) ★ | 12 AUG | TAIPEI, TAIWAN (KEELUNG) |
| 2 JUL | MOOREA, FRENCH POLYNESIA ⚓ | 13 AUG | CRUISING THE SOUTH CHINA SEA |
| 3-7 JUL | CRUISING THE PACIFIC OCEAN | 14 AUG | HONG KONG 🇸🇨 |
| 8 JUL | HONOLULU, HAWAIIAN ISLANDS, USA ★ | 15 AUG | HONG KONG |
| 9 JUL | MAUI, HAWAIIAN ISLANDS, USA (KAHALUI) | 16-17 AUG | CRUISING THE SOUTH CHINA SEA |
| 10-14 JUL | CRUISING THE PACIFIC OCEAN | 18 AUG | HO CHI MINH CITY, VIETNAM (PHU MY) |
| 15 JUL | LOS ANGELES, USA ★ | 19 AUG | CRUISING THE SOUTH CHINA SEA |
| 16 JUL | CRUISING THE PACIFIC OCEAN | 20 AUG | SINGAPORE ★ |
| 17 JUL | SAN FRANCISCO, USA | 21- 23 AUG | CRUISING THE JAVA SEA (CROSS THE EQUATOR) |
| 18 JUL | CRUISING THE PACIFIC OCEAN | 24 AUG | BALI, INDONESIA (BENOA) ⚓ |
| 19 JUL | VICTORIA, B.C., CANADA ★ | 25-26 AUG | CRUISING THE INDIAN OCEAN |
| 20 JUL | VANCOUVER, B.C., CANADA | 27 AUG | DARWIN ★ |
| 21 JUL | CRUISING THE INSIDE PASSAGE | 28 AUG – 1 SEP | CRUISING THE TIMOR AND CORAL SEAS |
| 22 JUL | WRANGELL, ALASKA | 2 SEP | BRISBANE |
| 23 JUL | JUNEAU, ALASKA ★ | 3 SEP | CRUISING THE TASMAN SEA |
| 24 JUL | HUBBARD GLACIER, ALASKA SCENIC CRUISING | 4 SEP | SYDNEY |

★ Full day and evening 🇸🇨 Full day and overnight. Where length in port is not indicated, port time may be half day or full day. For specific timings for each port, refer to the voyage itinerary on princess.com. Port times correct at time of publication and subject to change. M Maiden World Cruise call. ⚓ Access by ship's water shuttle, weather permitting. *Cruise itineraries are not guaranteed. Pricing is subject to availability. Please see Page 19 for full Terms & Conditions.

| Itinerary | Departs 2027 | Nights | Interior from [*] | Interior from [*] |
|---|--------------|--------|----------------------------|----------------------------|
| Circle Pacific Cruise <small>*Fares are per person twin share.</small> | | | | |
| SYDNEY TO SYDNEY | 17 Jun 27 | 79 | \$17,899 | \$23,039 |
| BRISBANE TO BRISBANE | 15 Jun 27 | 79 | \$17,899 | \$23,039 |
| Circle Pacific Liner <small>*Fares are per person twin share.</small> | | | | |
| SYDNEY TO TOKYO | 17 Jun 27 | 49 | \$11,199 | \$14,389 |
| Circle Pacific Sector <small>*Fares are per person twin share.</small> | | | | |
| TOKYO TO SYDNEY | 5 Aug 27 | 30 | \$7,599 | \$9,549 |



^{*}Fares are per person (PP) in AUD, in complete twin stateroom as specified, based on lead categories at publication date 31/10/2024. inclusive of discounts. Valid for new bookings only. Not combinable with other offers. Fares based on specific departure dates only. Different fares apply to other dates. Supplements apply for higher room grades, categories and fare types. Some staterooms have obstructed views. Onboard currency varies, refer to princess.com for details. Fares available to book from 7 November 2024 for Captain's Circle Members; for all other guests, fares available to book from 14 November 2024. Accurate as at 31/10/2024. Advertised fares are available until allocation is exhausted and may fluctuate. Offer available on all fare types. Princess Standard fare is the cruise fare only. Princess Plus fare applies to the first 2 guests in the stateroom and includes the cruise fare packaged with the Plus Beverage Package, 1 device Wi-Fi, twice-daily premium desserts, 2 fitness class credits, unlimited juice bar, 2 Casual Dining credits, OceanNow® delivery and room service delivery. Princess Premier fare is valid for the first two guests in the stateroom and includes the cruise fare packaged with unlimited: drinks up to AU\$30, bottled water, specialty coffee, juice bar, specialty meals, casual dining, premium desserts and fitness classes. Also includes 4 device Wi-Fi, photo package, reserved theatre seating (production shows only), OceanNow® delivery and Room Service delivery. Fare Terms and Conditions: www.princess.com/cruise/packages. Captain's Circle 2027 Grand Princess Circle Pacific Offers start 7 November 2024 and ends 31 August 2025. To be eligible for the Captain's Circle offers, 1st guest in the stateroom must be a Captain's Circle Member. Valid for new bookings only on select 2027 Grand Princess Circle Pacific itineraries. Combinable with Launch Fares and Group fares only. Savings Offer is in AUD, per person and only applied to the first 2 guests in a stateroom. Savings based on fares launched from 14 November 2024 for non-Captain's Circle Members. Savings based on all fare types. Savings vary by voyage length as follows: cruises 49+ nights receive \$500 off per person; cruises 79+ nights receive \$1,000 off per person. Promo code ZSW. Onboard Spending Money (OBS) is per person, in AUD and applied to the first 2 guests in the stateroom only. Amount varies by voyage length as follows: 49+ nights receive \$400 per person; cruises 79+ nights receive \$1,000 per person. Currency varies by ship and itinerary, refer to princess.com for details. OBS expires at the conclusion of your cruise, is not transferable, not redeemable for cash and cannot be used in the casino or medical centre. *Captain's Circle Summer Cruises Onboard Spending Money (OBS) offer starts 7 November 2024 and ends 14 December 2024. To be eligible for the Captain's Circle offers, 1st guest in the stateroom must be a Captain's Circle Member. Valid for new bookings only on select 2027 Grand Princess Circle Pacific itineraries. Combinable with Launch Fares and Group fares only. OBS is per person, in AUD and applied to the first 2 guests in the stateroom only. Amount varies by voyage length as follows: Up to 3 nights receive \$35PP; 4-9 nights receive \$75PP; 10+ nights and cruises receive \$150PP. Currency varies by ship and itinerary, refer to princess.com for details. OBS expires at the conclusion of your cruise, is not transferable, not redeemable for cash and cannot be used in the casino or medical centre. All travel is subject to Princess Cruises Passage Contract which guests are bound by. Cruise itineraries and onboard offerings are not guaranteed. Charges may apply for some activities, venues, and menu items. Credit card surcharges (Visa/Mastercard 1.1%; AMEX 2.75%; 1% PayPal). Carnival plc trading as Princess Cruises ABN 23 107 998 443.

2026-2027 Fares and Itineraries

| Departs | Ship | Cruise No. | Nights | Itinerary |
|-----------|-------|------------|--------|---|
| 7 Oct 26 | Crown | 3618 | 28 | SYDNEY > NEWCASTLE > MELBOURNE > ADELAIDE > ALBANY > MARGARET RIVER (BUSSELTON) > PERTH (FREMANTLE) > EXMOUTH > BROOME > YAMPI SOUND (SCENIC CRUISING) > KIMBERLEY COAST (SCENIC CRUISING) > DARWIN > PORT DOUGLAS (FOR THE GREAT BARRIER REEF) > WILLIS ISLAND (SCENIC CRUISING) > BRISBANE > SYDNEY |
| 7 Oct 26 | Crown | 3618A | 26 | SYDNEY > NEWCASTLE > MELBOURNE > ADELAIDE > ALBANY > MARGARET RIVER (BUSSELTON) > PERTH (FREMANTLE) > EXMOUTH > BROOME > YAMPI SOUND (SCENIC CRUISING) > KIMBERLEY COAST (SCENIC CRUISING) > DARWIN > PORT DOUGLAS (FOR THE GREAT BARRIER REEF) > WILLIS ISLAND (SCENIC CRUISING) > BRISBANE |
| 7 Oct 26 | Crown | 3618B | 11 | SYDNEY > NEWCASTLE > MELBOURNE > ADELAIDE > ALBANY > MARGARET RIVER (BUSSELTON) > PERTH (FREMANTLE) |
| 7 Oct 26 | Crown | 3618C | 6 | SYDNEY > NEWCASTLE > MELBOURNE > ADELAIDE |
| 7 Oct 26 | Crown | 3618D | 4 | SYDNEY > NEWCASTLE > MELBOURNE |
| 11 Oct 26 | Crown | 3618E | 24 | MELBOURNE > ADELAIDE > ALBANY > MARGARET RIVER (BUSSELTON) > PERTH (FREMANTLE) > EXMOUTH > BROOME > YAMPI SOUND (SCENIC CRUISING) > KIMBERLEY COAST (SCENIC CRUISING) > DARWIN > PORT DOUGLAS (FOR THE GREAT BARRIER REEF) > WILLIS ISLAND (SCENIC CRUISING) > BRISBANE > SYDNEY |
| 13 Oct 26 | Crown | 3618F | 22 | ADELAIDE > ALBANY > MARGARET RIVER (BUSSELTON) > PERTH (FREMANTLE) > EXMOUTH > BROOME > YAMPI SOUND (SCENIC CRUISING) > KIMBERLEY COAST (SCENIC CRUISING) > DARWIN > PORT DOUGLAS (FOR THE GREAT BARRIER REEF) > WILLIS ISLAND (SCENIC CRUISING) > BRISBANE > SYDNEY |
| 18 Oct 26 | Crown | 3618G | 17 | PERTH (FREMANTLE) > EXMOUTH > BROOME > YAMPI SOUND (SCENIC CRUISING) > KIMBERLEY COAST (SCENIC CRUISING) > DARWIN > PORT DOUGLAS (FOR THE GREAT BARRIER REEF) > WILLIS ISLAND (SCENIC CRUISING) > BRISBANE > SYDNEY |
| 18 Oct 26 | Crown | 3618H | 15 | PERTH (FREMANTLE) > EXMOUTH > BROOME > YAMPI SOUND (SCENIC CRUISING) > KIMBERLEY COAST (SCENIC CRUISING) > DARWIN > PORT DOUGLAS (FOR THE GREAT BARRIER REEF) > WILLIS ISLAND (SCENIC CRUISING) > BRISBANE |
| 2 Nov 26 | Crown | 3618I | 2 | BRISBANE > SYDNEY |
| 3 Nov 26 | Grand | A640 | 15 | SYDNEY > FIORDLAND NATIONAL PARK (SCENIC CRUISING) > DUNEDIN (PORT CHALMERS) > CHRISTCHURCH (LYTTELTON) > PICTON (FOR MARLBOROUGH WINE REGION) > AUCKLAND > TAURANGA > BAY OF ISLANDS > SYDNEY |
| 6 Nov 26 | Royal | 1643 | 19 | SINGAPORE > KUALA LUMPUR (PORT KELANG) > PENANG > PHUKET > LOMBOK > DARWIN > YORKEYS KNOB (FOR CAIRNS) > BRISBANE > SYDNEY |
| 6 Nov 26 | Royal | 1643A | 17 | SINGAPORE > KUALA LUMPUR (PORT KELANG) > PENANG > PHUKET > LOMBOK > DARWIN > YORKEYS KNOB (FOR CAIRNS) > BRISBANE |
| 18 Nov 26 | Grand | A641 | 12 | SYDNEY > MELBOURNE > KANGAROO ISLAND > ADELAIDE > PORT LINCOLN > HOBART > PORT ARTHUR > SYDNEY |
| 23 Nov 26 | Royal | 1643B | 10 | BRISBANE > SYDNEY > AIRLIE BEACH (FOR THE WHITSUNDAYS) > YORKEYS KNOB (FOR CAIRNS) > PORT DOUGLAS (FOR THE GREAT BARRIER REEF) > WILLIS ISLAND (SCENIC CRUISING) > BRISBANE |
| 23 Nov 26 | Royal | 1643C | 2 | BRISBANE > SYDNEY |
| 25 Nov 26 | Royal | 1644 | 10 | SYDNEY > AIRLIE BEACH (FOR THE WHITSUNDAYS) > YORKEYS KNOB (FOR CAIRNS) > PORT DOUGLAS (FOR THE GREAT BARRIER REEF) > WILLIS ISLAND (SCENIC CRUISING) > BRISBANE > SYDNEY |
| 30 Nov 26 | Grand | A642 | 9 | SYDNEY > BRISBANE > AIRLIE BEACH (FOR THE WHITSUNDAYS) > YORKEYS KNOB (FOR CAIRNS) > WILLIS ISLAND (SCENIC CRUISING) > SYDNEY |
| 3 Dec 26 | Royal | 1644A | 2 | BRISBANE > SYDNEY |
| 5 Dec 26 | Royal | 1645 | 13 | SYDNEY > BAY OF ISLANDS > AUCKLAND > PICTON (FOR MARLBOROUGH WINE REGION) > CHRISTCHURCH (LYTTELTON) > DUNEDIN (PORT CHALMERS) > FIORDLAND NATIONAL PARK (SCENIC CRUISING) > SYDNEY |
| 9 Dec 26 | Grand | A643 | 2 | SYDNEY > BRISBANE |
| 11 Dec 26 | Grand | A644 | 12 | BRISBANE > NEWCASTLE > SYDNEY > EDEN > BURNIE > GREAT OYSTER BAY & FREYCINET PENINSULA (SCENIC CRUISING) > HOBART > PORT ARTHUR > BRISBANE |
| 18 Dec 26 | Royal | 1646 | 4 | SYDNEY > EDEN > SYDNEY |
| 22 Dec 26 | Royal | 1701 | 13 | SYDNEY > BAY OF ISLANDS > AUCKLAND > PICTON (FOR MARLBOROUGH WINE REGION) > CHRISTCHURCH (LYTTELTON) > DUNEDIN (PORT CHALMERS) > FIORDLAND NATIONAL PARK (SCENIC CRUISING) > SYDNEY |
| 23 Dec 26 | Grand | A701 | 14 | BRISBANE > AUCKLAND > TAURANGA > PICTON (FOR MARLBOROUGH WINE REGION) > CHRISTCHURCH (LYTTELTON) > DUNEDIN (PORT CHALMERS) > FIORDLAND NATIONAL PARK (SCENIC CRUISING) > BRISBANE |
| 4 Jan 27 | Royal | 1702 | 12 | SYDNEY > SUVA > LAUTOKA > DRAVUNI ISLAND > NOUMÉA > SYDNEY |
| 6 Jan 27 | Grand | A702 | 14 | BRISBANE > LAUTOKA > SUVA > DRAVUNI ISLAND > MYSTERY ISLAND > NOUMÉA > LIFOU > BRISBANE |
| 16 Jan 27 | Royal | 1703 | 14 | SYDNEY > BAY OF ISLANDS > AUCKLAND > TAURANGA > PICTON (FOR MARLBOROUGH WINE REGION) > CHRISTCHURCH (LYTTELTON) > DUNEDIN (PORT CHALMERS) > FIORDLAND NATIONAL PARK (SCENIC CRUISING) > SYDNEY |
| 20 Jan 27 | Grand | A703 | 12 | BRISBANE > SYDNEY > EDEN > GREAT OYSTER BAY & FREYCINET PENINSULA (SCENIC CRUISING) > HOBART > PORT ARTHUR > BURNIE > NEWCASTLE > BRISBANE |
| 30 Jan 27 | Royal | 1704 | 8 | SYDNEY > HOBART > PORT ARTHUR > MELBOURNE > EDEN > SYDNEY |
| 1 Feb 27 | Grand | A704 | 14 | BRISBANE > AUCKLAND > TAURANGA > PICTON (FOR MARLBOROUGH WINE REGION) > CHRISTCHURCH (LYTTELTON) > DUNEDIN (PORT CHALMERS) > FIORDLAND NATIONAL PARK (SCENIC CRUISING) > BRISBANE |
| 7 Feb 27 | Royal | 1705 | 13 | SYDNEY > BAY OF ISLANDS > AUCKLAND > PICTON (FOR MARLBOROUGH WINE REGION) > CHRISTCHURCH (LYTTELTON) > DUNEDIN (PORT CHALMERS) > FIORDLAND NATIONAL PARK (SCENIC CRUISING) > SYDNEY |
| 15 Feb 27 | Grand | A705 | 14 | BRISBANE > AUCKLAND > TAURANGA > PICTON (FOR MARLBOROUGH WINE REGION) > CHRISTCHURCH (LYTTELTON) > DUNEDIN (PORT CHALMERS) > FIORDLAND NATIONAL PARK (SCENIC CRUISING) > BRISBANE |
| 20 Feb 27 | Royal | 1706 | 14 | SYDNEY > BAY OF ISLANDS > AUCKLAND > TAURANGA > PICTON (FOR MARLBOROUGH WINE REGION) > CHRISTCHURCH (LYTTELTON) > DUNEDIN (PORT CHALMERS) > FIORDLAND NATIONAL PARK (SCENIC CRUISING) > SYDNEY |

| Departs | Ship | Cruise No. | Nights | Itinerary |
|-----------|-------|------------|--------|--|
| 1 Mar 27 | Grand | A706 | 7 | BRISBANE > TOWNSVILLE > YORKEYS KNOB (FOR CAIRNS) > WILLIS ISLAND (SCENIC CRUISING) > AIRLIE BEACH (FOR THE WHITSUNDAYS) > BRISBANE |
| 6 Mar 27 | Royal | 1707 | 13 | SYDNEY > BAY OF ISLANDS > AUCKLAND > PICTON (FOR MARLBOROUGH WINE REGION) > CHRISTCHURCH (LYTTELTON) > DUNEDIN (PORT CHALMERS) > FIORDLAND NATIONAL PARK (SCENIC CRUISING) > SYDNEY |
| 8 Mar 27 | Grand | A707 | 8 | BRISBANE > AIRLIE BEACH (FOR THE WHITSUNDAYS) > TOWNSVILLE > YORKEYS KNOB (FOR CAIRNS) > PORT DOUGLAS (FOR THE GREAT BARRIER REEF) > WILLIS ISLAND (SCENIC CRUISING) > BRISBANE |
| 8 Mar 27 | Grand | A707A | 12 | BRISBANE > AIRLIE BEACH (FOR THE WHITSUNDAYS) > TOWNSVILLE > YORKEYS KNOB (FOR CAIRNS) > PORT DOUGLAS (FOR THE GREAT BARRIER REEF) > WILLIS ISLAND (SCENIC CRUISING) > BRISBANE > NEWCASTLE > SYDNEY |
| 16 Mar 27 | Grand | A708 | 4 | BRISBANE > NEWCASTLE > SYDNEY |
| 19 Mar 27 | Royal | 1708 | 6 | SYDNEY > EDEN > GREAT OYSTER BAY & FREYCINET PENINSULA (SCENIC CRUISING) > HOBART > PORT ARTHUR > SYDNEY |
| 20 Mar 27 | Grand | A709 | 13 | SYDNEY > LAUTOKA > SUVA > DRAVUNI ISLAND > MYSTERY ISLAND > NOUMÉA > SYDNEY |
| 25 Mar 27 | Royal | 1709 | 3 | SYDNEY > EDEN > SYDNEY |
| 2 Apr 27 | Grand | A710 | 28 | SYDNEY > NEWCASTLE > MELBOURNE > ADELAIDE > ALBANY > MARGARET RIVER (BUSSELTON) > PERTH (FREMANTLE) > EXMOUTH > BROOME > YAMPI SOUND (SCENIC CRUISING) > KIMBERLEY COAST (SCENIC CRUISING) > DARWIN > PORT DOUGLAS (FOR THE GREAT BARRIER REEF) > WILLIS ISLAND (SCENIC CRUISING) > BRISBANE > SYDNEY |
| 2 Apr 27 | Grand | A710A | 26 | SYDNEY > NEWCASTLE > MELBOURNE > ADELAIDE > ALBANY > MARGARET RIVER (BUSSELTON) > PERTH (FREMANTLE) > EXMOUTH > BROOME > YAMPI SOUND (SCENIC CRUISING) > KIMBERLEY COAST (SCENIC CRUISING) > DARWIN > PORT DOUGLAS (FOR THE GREAT BARRIER REEF) > WILLIS ISLAND (SCENIC CRUISING) > BRISBANE |
| 2 Apr 27 | Grand | A710B | 11 | SYDNEY > NEWCASTLE > MELBOURNE > ADELAIDE > ALBANY > MARGARET RIVER (BUSSELTON) > PERTH (FREMANTLE) |
| 2 Apr 27 | Grand | A710C | 6 | SYDNEY > NEWCASTLE > MELBOURNE > ADELAIDE |
| 2 Apr 27 | Grand | A710D | 4 | SYDNEY > NEWCASTLE > MELBOURNE |
| 6 Apr 27 | Grand | A710E | 24 | MELBOURNE > ADELAIDE > ALBANY > MARGARET RIVER (BUSSELTON) > PERTH (FREMANTLE) > EXMOUTH > BROOME > YAMPI SOUND (SCENIC CRUISING) > KIMBERLEY COAST (SCENIC CRUISING) > DARWIN > PORT DOUGLAS (FOR THE GREAT BARRIER REEF) > WILLIS ISLAND (SCENIC CRUISING) > BRISBANE > SYDNEY |
| 8 Apr 27 | Grand | A710F | 22 | ADELAIDE > ALBANY > MARGARET RIVER (BUSSELTON) > PERTH (FREMANTLE) > EXMOUTH > BROOME > YAMPI SOUND (SCENIC CRUISING) > KIMBERLEY COAST (SCENIC CRUISING) > DARWIN > PORT DOUGLAS (FOR THE GREAT BARRIER REEF) > WILLIS ISLAND (SCENIC CRUISING) > BRISBANE > SYDNEY |
| 13 Apr 27 | Grand | A710G | 17 | PERTH (FREMANTLE) > EXMOUTH > BROOME > YAMPI SOUND (SCENIC CRUISING) > KIMBERLEY COAST (SCENIC CRUISING) > DARWIN > PORT DOUGLAS (FOR THE GREAT BARRIER REEF) > WILLIS ISLAND (SCENIC CRUISING) > BRISBANE > SYDNEY |
| 28 Apr 27 | Grand | A710H | 2 | BRISBANE > SYDNEY |
| 30 Apr 27 | Grand | A711 | 17 | SYDNEY > BRISBANE > WILLIS ISLAND (SCENIC CRUISING) > PORT DOUGLAS (FOR THE GREAT BARRIER REEF) > DARWIN > KIMBERLEY COAST (SCENIC CRUISING) > YAMPI SOUND (SCENIC CRUISING) > BROOME > EXMOUTH > PERTH (FREMANTLE) |
| 17 May 27 | Grand | A712 | 17 | PERTH (FREMANTLE) > EXMOUTH > BROOME > YAMPI SOUND (SCENIC CRUISING) > KIMBERLEY COAST (SCENIC CRUISING) > DARWIN > PORT DOUGLAS (FOR THE GREAT BARRIER REEF) > WILLIS ISLAND (SCENIC CRUISING) > BRISBANE > SYDNEY |
| 17 May 27 | Grand | A712A | 15 | PERTH (FREMANTLE) > EXMOUTH > BROOME > YAMPI SOUND (SCENIC CRUISING) > KIMBERLEY COAST (SCENIC CRUISING) > DARWIN > PORT DOUGLAS (FOR THE GREAT BARRIER REEF) > WILLIS ISLAND (SCENIC CRUISING) > BRISBANE |
| 1 Jun 27 | Grand | A712B | 14 | BRISBANE > SYDNEY > AIRLIE BEACH > TOWNSVILLE > YORKEYS KNOB (FOR CAIRNS) > PORT DOUGLAS (FOR THE GREAT BARRIER REEF) > ALOTAU (MILNE BAY) > CONFLICT ISLANDS > BRISBANE |
| 3 Jun 27 | Grand | A713 | 14 | SYDNEY > AIRLIE BEACH > TOWNSVILLE > YORKEYS KNOB (FOR CAIRNS) > PORT DOUGLAS (FOR THE GREAT BARRIER REEF) > ALOTAU (MILNE BAY) > CONFLICT ISLANDS > BRISBANE > SYDNEY |
| 15 Jun 27 | Grand | A713B | 79 | BRISBANE > SYDNEY > AUCKLAND > BAY OF ISLANDS > SUVA > DRAVUNI ISLAND > APIA (SAMOA) > CROSS INTERNATIONAL DATELINE > TAHITI (PAPEETE) > MOOREA > HONOLULU > MAUI (KAHULUI) > LOS ANGELES > SAN FRANCISCO > VICTORIA > VANCOUVER > WRANGELL > JUNEAU > HUBBARD GLACIER (SCENIC CRUISING) > COLLEGE FJORD (SCENIC CRUISING) > ANCHORAGE (WHITTIER) > CROSS INTERNATIONAL DATELINE > TOKYO > SHIMIZU (FOR MT. FUJI) > OSAKA (FOR KYOTO) > KOCHI > KAGOSHIMA > ISHIGAKI > TAIPEI (KEELUNG) > HONG KONG (OVERNIGHT) > HO CHI MINH CITY (PHU MY) > SINGAPORE > BALI (BENOA) > DARWIN > BRISBANE |
| 17 Jun 27 | Grand | A714A | 79 | SYDNEY > AUCKLAND > BAY OF ISLANDS > SUVA > DRAVUNI ISLAND > APIA (SAMOA) > CROSS INTERNATIONAL DATELINE > TAHITI (PAPEETE) > MOOREA > HONOLULU > MAUI (KAHULUI) > LOS ANGELES > SAN FRANCISCO > VICTORIA > VANCOUVER > WRANGELL > JUNEAU > HUBBARD GLACIER (SCENIC CRUISING) > COLLEGE FJORD (SCENIC CRUISING) > ANCHORAGE (WHITTIER) > CROSS INTERNATIONAL DATELINE > TOKYO > SHIMIZU (FOR MT. FUJI) > OSAKA (FOR KYOTO) > KOCHI > KAGOSHIMA > ISHIGAKI > TAIPEI (KEELUNG) > HONG KONG (OVERNIGHT) > HO CHI MINH CITY (PHU MY) > SINGAPORE > BALI (BENOA) > DARWIN > BRISBANE > SYDNEY |
| 17 Jun 27 | Grand | A714B | 49 | SYDNEY > AUCKLAND > BAY OF ISLANDS > SUVA > DRAVUNI ISLAND > APIA (SAMOA) > CROSS INTERNATIONAL DATELINE > TAHITI (PAPEETE) > MOOREA > HONOLULU > MAUI (KAHULUI) > LOS ANGELES > SAN FRANCISCO > VICTORIA > VANCOUVER > WRANGELL > JUNEAU > HUBBARD GLACIER (SCENIC CRUISING) > COLLEGE FJORD (SCENIC CRUISING) > ANCHORAGE (WHITTIER) > CROSS INTERNATIONAL DATELINE > TOKYO |
| 17 Jun 27 | Grand | A714C | 4 | SYDNEY > AUCKLAND |
| 21 Jun 27 | Grand | A714D | 79 | AUCKLAND > BAY OF ISLANDS > SUVA > DRAVUNI ISLAND > APIA (SAMOA) > CROSS INTERNATIONAL DATELINE > TAHITI (PAPEETE) > MOOREA > HONOLULU > MAUI (KAHULUI) > LOS ANGELES > SAN FRANCISCO > VICTORIA > VANCOUVER > WRANGELL > JUNEAU > HUBBARD GLACIER (SCENIC CRUISING) > COLLEGE FJORD (SCENIC CRUISING) > ANCHORAGE (WHITTIER) > CROSS INTERNATIONAL DATELINE > TOKYO > SHIMIZU (FOR MT. FUJI) > OSAKA (FOR KYOTO) > KOCHI > KAGOSHIMA > ISHIGAKI > TAIPEI (KEELUNG) > HONG KONG (OVERNIGHT) > HO CHI MINH CITY (PHU MY) > SINGAPORE > BALI (BENOA) > DARWIN > BRISBANE > SYDNEY > AUCKLAND |
| 5 Aug 27 | Grand | A716 | 30 | TOKYO > SHIMIZU (FOR MT. FUJI) > OSAKA (FOR KYOTO) > KOCHI > KAGOSHIMA > ISHIGAKI > TAIPEI (KEELUNG) > HONG KONG (OVERNIGHT) > HO CHI MINH CITY (PHU MY) > SINGAPORE > BALI (BENOA) > DARWIN > BRISBANE > SYDNEY |

*Cruise itineraries are not guaranteed. Pricing is subject to availability. Please see Page 19 for full Terms & Conditions.

CRUISE CALENDAR

| Departs | Ship | Cruise | Nights | Itinerary |
|------------------------------|-------|--------|--------|---|
| Cruise to/from Sydney | | | | |
| 7 Oct 26 | Crown | 3618 | 28 | Round Australia, RT Sydney |
| 7 Oct 26 | Crown | 3618A | 26 | Round Australia, Sydney - Brisbane |
| 7 Oct 26 | Crown | 3618B | 11 | Southern Australia Explorer, Sydney - Perth (Fremantle) |
| 7 Oct 26 | Crown | 3618C | 6 | Southern Australia Explorer, Sydney - Adelaide |
| 7 Oct 26 | Crown | 3618D | 4 | Hunter Coast Seacation, Sydney - Melbourne |
| 11 Oct 26 | Crown | 3618E | 24 | Round Australia, Melbourne - Sydney |
| 13 Oct 26 | Crown | 3618F | 22 | Round Australia, Adelaide - Sydney |
| 18 Oct 26 | Crown | 3618G | 17 | Northern Explorer, Perth (Fremantle) - Sydney |
| 2 Nov 26 | Crown | 3618I | 2 | Australia Seacation, Brisbane - Sydney |
| 3 Nov 26 | Grand | A640 | 15 | New Zealand, RT Sydney |
| 6 Nov 26 | Royal | 1643 | 19 | Asia & Australia, Singapore - Sydney |
| 18 Nov 26 | Grand | A641 | 12 | Southern Australia Explorer, RT Sydney |
| 23 Nov 26 | Royal | 1643C | 2 | Australia Seacation, Brisbane - Sydney |
| 25 Nov 26 | Royal | 1644 | 10 | Queensland, RT Sydney |
| 30 Nov 26 | Grand | A642 | 9 | Queensland, RT Sydney |
| 3 Dec 26 | Royal | 1644A | 2 | Australia Seacation, Brisbane - Sydney |
| 5 Dec 26 | Royal | 1645 | 13 | New Zealand, RT Sydney |
| 9 Dec 26 | Grand | A643 | 2 | Australia Seacation, Sydney - Brisbane |
| 18 Dec 26 | Royal | 1646 | 4 | Sapphire Coast Seacation, RT Sydney |
| 22 Dec 26 | Royal | 1701 | 13 | New Zealand Holiday, RT Sydney |
| 4 Jan 27 | Royal | 1702 | 12 | Fiji & South Pacific, RT Sydney |
| 16 Jan 27 | Royal | 1703 | 14 | New Zealand, RT Sydney |
| 30 Jan 27 | Royal | 1704 | 8 | Tasmania, RT Sydney |
| 7 Feb 27 | Royal | 1705 | 13 | New Zealand, RT Sydney |
| 20 Feb 27 | Royal | 1706 | 14 | New Zealand, RT Sydney |
| 6 Mar 27 | Royal | 1707 | 13 | New Zealand, RT Sydney |
| 8 Mar 27 | Grand | A707A | 12 | Queensland, Brisbane - Sydney |
| 16 Mar 27 | Grand | A708 | 4 | Hunter Coast Seacation, Brisbane - Sydney |
| 19 Mar 27 | Royal | 1708 | 6 | Tasmania, RT Sydney |
| 20 Mar 27 | Grand | A709 | 13 | Fiji & South Pacific, RT Sydney |
| 25 Mar 27 | Royal | 1709 | 3 | Sapphire Coast Seacation, RT Sydney |
| 2 Apr 27 | Grand | A710 | 28 | Round Australia, RT Sydney |
| 2 Apr 27 | Grand | A710A | 26 | Round Australia, Sydney - Brisbane |
| 2 Apr 27 | Grand | A710B | 11 | Southern Australia Explorer, Sydney - Perth (Fremantle) |
| 2 Apr 27 | Grand | A710C | 6 | Southern Australia Explorer, Sydney - Adelaide |
| 2 Apr 27 | Grand | A710D | 4 | Hunter Coast Seacation, Sydney - Melbourne |
| 6 Apr 27 | Grand | A710E | 24 | Round Australia, Melbourne - Sydney |
| 8 Apr 27 | Grand | A710F | 22 | Round Australia, Adelaide - Sydney |
| 13 Apr 27 | Grand | A710G | 17 | Northern Explorer, Perth (Fremantle) - Sydney |
| 28 Apr 27 | Grand | A710H | 2 | Australia Seacation, Brisbane - Sydney |
| 30 Apr 27 | Grand | A711 | 17 | Northern Explorer, Sydney - Perth (Fremantle) |
| 17 May 27 | Grand | A712 | 17 | Northern Explorer, Perth (Fremantle) - Sydney |
| 17 May 27 | Grand | A712A | 15 | Northern Explorer, Perth (Fremantle) - Brisbane |
| 3 Jun 27 | Grand | A713 | 14 | Papua New Guinea, RT Sydney |
| 17 Jun 27 | Grand | A714A | 79 | Circle Pacific, RT Sydney |
| 17 Jun 27 | Grand | A714B | 49 | Circle Pacific Liner, Sydney - Tokyo |
| 17 Jun 27 | Grand | A714C | 4 | Australia Seacation, Sydney - Auckland |
| 5 Aug 27 | Grand | A716 | 30 | Circle Pacific Segment, Tokyo - Sydney |

| Departs | Ship | Cruise | Nights | Itinerary |
|--------------------------------|-------|--------|--------|---|
| Cruise to/from Brisbane | | | | |
| 7 Oct 26 | Crown | 3618A | 26 | Round Australia, Sydney - Brisbane |
| 18 Oct 26 | Crown | 3618H | 15 | Northern Explorer, Perth (Fremantle) - Brisbane |
| 2 Nov 26 | Crown | 3618I | 2 | Australia Seacation, Brisbane - Sydney |
| 6 Nov 26 | Royal | 1643A | 17 | Asia & Australia, Singapore - Brisbane |
| 23 Nov 26 | Royal | 1643B | 10 | Queensland, RT Brisbane |
| 23 Nov 26 | Royal | 1643C | 2 | Australia Seacation, Brisbane - Sydney |
| 3 Dec 26 | Royal | 1644A | 2 | Australia Seacation, Brisbane - Sydney |
| 9 Dec 26 | Grand | A643 | 2 | Australia Seacation, Sydney - Brisbane |
| 11 Dec 26 | Grand | A644 | 12 | Tasmania, RT Brisbane |
| 23 Dec 26 | Grand | A701 | 14 | New Zealand, RT Brisbane |
| 6 Jan 27 | Grand | A702 | 14 | Fiji & South Pacific, RT Brisbane |
| 20 Jan 27 | Grand | A703 | 12 | Tasmania, RT Brisbane |
| 1 Feb 27 | Grand | A704 | 14 | New Zealand, RT Brisbane |
| 15 Feb 27 | Grand | A705 | 14 | New Zealand, RT Brisbane |
| 1 Mar 27 | Grand | A706 | 7 | Queensland, RT Brisbane |
| 8 Mar 27 | Grand | A707 | 8 | Queensland, RT Brisbane |
| 8 Mar 27 | Grand | A707A | 12 | Queensland, Brisbane - Sydney |
| 16 Mar 27 | Grand | A708 | 4 | Hunter Coast Seacation, Brisbane - Sydney |
| 2 Apr 27 | Grand | A710A | 26 | Round Australia, Sydney - Brisbane |
| 28 Apr 27 | Grand | A710H | 2 | Australia Seacation, Brisbane - Sydney |
| 17 May 27 | Grand | A712A | 15 | Northern Explorer, Perth (Fremantle) - Brisbane |
| 1 Jun 27 | Grand | A712B | 14 | Papua New Guinea, RT Brisbane |
| 15 Jun 27 | Grand | A713B | 79 | Circle Pacific, RT Brisbane |

| Departs | Ship | Cruise | Nights | Itinerary |
|-----------------------------|-------|--------|--------|---|
| Cruise to/from Perth | | | | |
| 7 Oct 26 | Crown | 3618B | 11 | Southern Australia Explorer, Sydney - Perth (Fremantle) |
| 18 Oct 26 | Crown | 3618G | 17 | Northern Explorer, Perth (Fremantle) - Sydney |
| 18 Oct 26 | Crown | 3618H | 15 | Northern Explorer, Perth (Fremantle) - Brisbane |
| 2 Apr 27 | Grand | A710B | 11 | Southern Australia Explorer, Sydney - Perth (Fremantle) |
| 13 Apr 27 | Grand | A710G | 17 | Northern Explorer, Perth (Fremantle) - Sydney |
| 30 Apr 27 | Grand | A711 | 17 | Northern Explorer, Sydney - Perth (Fremantle) |
| 17 May 27 | Grand | A712 | 17 | Northern Explorer, Perth (Fremantle) - Sydney |
| 17 May 27 | Grand | A712A | 15 | Northern Explorer, Perth (Fremantle) - Brisbane |

| Departs | Ship | Cruise | Nights | Itinerary |
|--------------------------------|-------|--------|--------|--|
| Cruise to/from Adelaide | | | | |
| 7 Oct 26 | Crown | 3618C | 6 | Southern Australia Explorer, Sydney - Adelaide |
| 13 Oct 26 | Crown | 3618F | 22 | Round Australia, Adelaide - Sydney |
| 2 Apr 27 | Grand | A710C | 6 | Southern Australia Explorer, Sydney - Adelaide |
| 8 Apr 27 | Grand | A710F | 22 | Round Australia, Adelaide - Sydney |

| Departs | Ship | Cruise | Nights | Itinerary |
|---------------------------------|-------|--------|--------|--|
| Cruise to/from Melbourne | | | | |
| 7 Oct 26 | Crown | 3618D | 4 | Hunter Coast Seacation, Sydney - Melbourne |
| 11 Oct 26 | Crown | 3618E | 24 | Round Australia, Melbourne - Sydney |
| 2 Apr 27 | Grand | A710D | 4 | Hunter Coast Seacation, Sydney - Melbourne |
| 6 Apr 27 | Grand | A710E | 24 | Round Australia, Melbourne - Sydney |

| Departs | Ship | Cruise | Nights | Itinerary |
|--------------------------------|-------|--------|--------|--|
| Cruise to/from Auckland | | | | |
| 17 Jun 27 | Grand | A714C | 4 | Australia Seacation, Sydney - Auckland |
| 21 Jun 27 | Grand | A714D | 79 | Circle Pacific, RT Auckland |

BOOK NOW! Contact your travel agent

Call **13 24 88**

Visit **princess.com**

